



# MAGNET

## Alexander's Meanders

Happy New Year Everyone!

What lies heavily on my heart these days is the tragic event that was the tsunami that hit Indonesia. To date 150,000 people are recorded perished. I am told that the missing persons list is significantly longer. Odds are that most of the names on that list will be shifted to the death toll. So it is possible that the death toll will double or even triple before all accounts are made. Conceptually I find this unfathomable. In nearly the blink of an eye we have lost, probably, one quarter million people. What a terrific reminder of the power of nature and the fragility of our lives.

This reminder made our first Sunday of the year all that more important. It was wonderful to gather together and remind ourselves of love. I thoroughly enjoyed, and many others reported likewise, speaking about, and hearing others speak about, persons in our lives whom we love. It was an important ritual, reminding us of the need to speak of love in a bruised and hurting world. Indeed, speaking aloud of love makes that love more real. So Sunday was a great source of comfort, especially given the tragic incident in Indonesia.

As this New Year turns, I encourage each of you to count your blessings. I especially encourage you to tell those people in your life whom you love, "I love you." We never know when the hand of fate will sweep the sickle of death in our direction, so there is no time like the present to break free of our own restraints and reach out to touch those we love. Indeed, there is no time like the present to reach out and touch those in need, either.

This is a somber note on which to begin the New Year, but an important one. So rather than make New Year's resolutions this time around, count your blessings, reach out in love, remembering the fragility of this miracle we call life.

I look forward to a splendid new year with you!

Alex



## Executive Excursions

Hello All!

The beginning of 2005 finds us finishing up our work from 2004. We will have to petition someone to make the year a little longer so we can get everything done! The good news, though, is that the supplemental pledge drive has seen 49 members or friends increase their pledge or give a one-time gift for the matching funds offer. This is an increase of \$9845 (before the matching funds.) We weren't able to take full advantage of the generous, anonymous donor's offer but it was very close. And just as important, there are several folks that have missed the canvass process and their wishes are not known in regards to their pledge. Knowing your intentions is the basis of what we can plan to do in the coming year. Call George Rourk or Thom Adis if you have not yet completed your pledge card.

So now, it's apparent we'll have some money to fund our committees and compensate our employees. Now begins the process to allocate precious funds entrusted to our church community. This is a great opportunity to subtly shift our methods so we can make a systematic change to take the cart out from in front of the horse. What do I mean? Well, we've all been frustrated for years about always being on the verge of growth, but never really seeing it happen. Part of this frustration is that our size and structure is that of a program church yet we don't have the breadth of programs to stoke that growth. This by no way means that our committees are not doing a fine job... it's more like we're trying to run a three-legged race with 12 legs going in different directions.

One of the advantages to belonging to the bigger UU picture via the UUA and the Heartland District, is that we have the benefit of folks who have been where we are, have left where we are and will share that info

with us. One of the things that is true for all churches, not just UU churches but all churches, is that people find community and join churches to be a part of something bigger than themselves. People stay because programs offered address their needs and they in turn become part of sustaining those programs and more.

Our budgeting process in the past has asked committees to give a dollar number for the amount of money they need for the coming year and then when the budget is done, the committees plan what they can do with what they received. This is akin to living from paycheck to paycheck which all of us have done and many of us are still doing. I'm sure this is not the way any of us would like it to be. It's hard on the nerves and certainly hard to plan anything. We want to try to move out of that mode into one that will be more productive for all of us in terms not only of money, but also time, effort and results. I believe we have several examples right now of how that has worked.



The congregational response to the Families Like Us program has been a sterling validation that our members and friends will gladly and consistently support a program that has a goal and specific ways to be involved on many levels. The strong desire to make a presence in the community brought many folks together to show their willingness and desire to put UU'ism in action. Unfortunately, the response from the community was not at the level they sought to reach. The FLUs committee is currently reassessing their program. One thing was certainly demonstrated, the committee did a wonderful job of giving everyone in our church community a place to show their love and care by contributing to the events. Providing programs is the key to building a church community and family that will con-

*(Continued on page 4)*

(Continued from page 3)

tinue to grown, not just for the sake of growth, but so more people can find what we have found... a church where we can explore a religious, humanistic and/or spiritual path that will lend direction and perhaps, meaning to our lives. So, where do we go from here?

As committees meet next, please think about and decide what programs you would like to offer in the coming year. Then put a dollar amount to it. Submit your requests in the treasurer's box as soon as possible. This will be a great opportunity for us to reassess which programs we want to have. We may want to continue with some that we already have but we may also decide to try or retry other programs.

A church of our size should certainly be able to offer an Interweave program (gay/straight fellowship group), singles group, young adult programming and others. If you didn't hear the sermon on Dec. 26<sup>th</sup> by Julia Anderson about campus ministry, listen to it on the webpage or pick up a copy on the kiosk, as it talks in detail about programming and growth.

So, our work for the coming year is cut out for us. Let us all go forth and do our best..for each other and ourselves.

Joyfully yours,

Brenda Anderson  
President, UUCF

**THE WRITER'S GROUP WILL MEET ON  
TUESDAY, JANUARY 17TH AT 7:30 PM.**

(Continued from page 2)

Now that we are moving in a good direction with the elementary ages, we will concentrate more energy on improving the Youth Program. Reverend Alex and I have discussed the need for our high schoolers to be able to get together at a time that is more acceptable to the vast majority of our teens. Many churches only have youth group at their later service on Sundays. Some welcome their youth into their Sunday morning adult services and then set aside Sunday evenings for their youth group activities, when the kids are more awake and ready to worship, work and socialize together. We will be announcing a special meeting of parents and teens to brain-storm how we might improve our Youth Program. Watch your e-mail for more details.

Best wishes to all for a great 2005!

Kathy

### PROGRAM

GUEST PERFORMER: **Michael Krieger** will be performing an all-music service on **Sunday, January 16.**



## Ideas ...Thoughts ... Ideas ... Thoughts ...



### **HEARTLAND DISTRICT CHALICE LIGHTER GRANT PROGRAM**

Help Spread the Light of Unitarian Universalism! Inserted in your January Magnet is a brochure for the Heartland District Chalice Lighter Program. Please read it carefully; it is quite explanatory. A handful of us UUCFers have participated for several years now. There are three calls a year, and you can pledge as little as \$10 for each call.

Recent local grantees have been First U-U (Detroit), which received money for building repairs, and Emerson Church (Troy), which received money for an outdoor sign. UUCF would like to apply for a grant, possibly for the Families Like Us Program. However, there is a hitch. IN ORDER TO APPLY FOR A GRANT, a minimum percentage of UUCF Members must also be Chalice Lighters.

We hope you will send your application in as soon as possible. After we establish our eligibility it will still be a year before we can actually apply for a grant. (The rules may be rewritten in the near future.) But think how many other UU churches you will be helping in the meantime. PS. Non-UUCF members can also become Chalice Lighters, but won't be counted toward the membership requirement.

*Millie Foss, UUCF Chalice Lighter Liaison*

### **NANCY BAILEY RETIRES AFTER 25 YEARS WITH THE IRS**

Church member Nancy Bailey retired on October 1, 2004 after working 25 years at the Internal Revenue Service. Her first job at the IRS in 1979 was a part-time position answering tax questions on the IRS's 800 information line. Then because she needed to work full time, she transferred to a full-time secretarial job at the IRS which she held for two years. While working as a secretary for the IRS, Nancy took college accounting classes at night so that she would qualify for the Tax Auditor position whenever the IRS started hiring for this position, which the IRS did in late 1983. On April 30, 1984 Nancy was promoted to the Tax Auditor position, and she held this position at the IRS until she retired recently. In the last two years she worked at the Farmington Hills office of the IRS. At present Nancy and husband Paul have been busy setting up a home office for her in their home because Nancy will start preparing income tax returns at home starting January 2005. If you need her services, give Nancy a call .

### **DENOMINATIONAL AFFAIRS COMMITTEE**

- ◆ An **Anti-Racism Conference** is being hosted by several UU groups in Bloomington, Indiana February 4 thru 6. Cost is \$20-40 which includes housing. It is aimed at youth and young adults.
- ◆ There is an **Intergenerational Seminar** in New York City April 14-16. Its theme is "AIDS: Diffusing a Biological Time-Bomb". Hosted by UU United Nations Office.
- ◆ In case you haven't seen it, we have a copy of the most recent **Beacon Press catalog**. Or visit on-line at [www.uua.org/bookstore](http://www.uua.org/bookstore).

Information on these and other items are in the Denominational Affairs Box in the office.—Tom Bjorklund

## Special Activities

### *UUCF 2005 Winter Retreat*

This time we're doing it a bit differently, based upon the feedback provided during a recent congregational survey (thanks to all of you who participated!!). We'll be having the Retreat right here at UUCF and will complete the whole event in one day, Saturday January 29<sup>th</sup>. All adult members and friends of UUCF are welcome. The cost per person is \$30 and covers all related expenses. We'll start off at 8:00 am with an optional meditation or a yoga session. This will be followed by a continental breakfast, get to know you activities, morning presentation, catered lunch (please see the Social Events Bulletin Board for the menu), afternoon presentations and open conversations that should wrap up at 4:00 pm. There will be an optional, adults only, dinner afterwards at a local restaurant for those who want to revel into the evening.

Child care will be available at no extra cost (for both the retreat and dinner) but we need firm commitments (by Sunday 16 January) to coordinate the staff and plan interesting activities. The program will feature Rev. Alex Riegel and the topic will be,

"Do All Paths Really Lead Up the Same Mountain? Exploring the Question of Religious Diversity." (A more complete explanation of the topic can be found next to the sign up sheet on the bulletin board)

Please register on the signup sheet provided on the Social Events bulletin board in Adams Hall by Sunday Jan. 16. Indicate if you will need child care and if you plan to attend the optional dinner. Any questions, please contact Paul Denawetz, Dan Faber, or George Rourk.

Social Events Committee

### *It's Baaaack! You Asked! It's Coming! Adult Talent Show and Dance Saturday, March 19 at 7 PM*

Get the date on your calendar and your act together! This is the day when we "adults" bring out our inner child and let loose! Anything goes, as far as the "talent" goes! The time is sooner than you think! We're pleased to announce the amazing Dave Durham as the Master of Ceremonies and also the talented Steve Curtin as the Sound Engineer for the evening. If you attended one of our previous talent shows, this one is going to be even better! Those were just the "warm-ups"! If you've never attended one, you're in for a treat! We have some pretty incredible "talent" (term used loosely) here at UUCF. Then again, we have some pretty incredible talent (term used literally) here at UUCF. Sign-up sheet is posted on the Social Events bulletin board, so get your "act" together for the night. Questions? Janet Barna or Linda Daniels, Social Events Committee

### *Any Swingers Out There? Any Wannabes? - Adults Only*

Are you available on Sat., **Feb. 5** about **7:30 PM**? Then put on your comfy flat heeled shoes and join us as we follow our New

Years resolution (wasn't it?) to exercise, at the Pittsfield-Grange Hall in Ann Arbor. We are going **Contra Dancing**, a GREAT workout for your whole body! No experience or partner is needed! This dance is similar to square dancing, though done in line-form. Group instructions will be given before the dancing starts. Layer your clothing, since before the night is over you'll be down to bare as you dare. Repeat... this is a GREAT workout! The cost is about \$9 per person, and includes simple refreshments during the break. See the sign-up sheet on the Social Events bulletin board to car-pool, leaving our parking lot at 6:45PM. You can also meet us there at 3337 Ann Arbor-Saline Rd., about 1/4 mile south of I-94, EXIT 175, in Ann Arbor. Any questions? See Betty Marshall, Social Events Committee



## Action Outdoors:

January's the time to get out and play in the snow! With that in mind, let's go "Downhill".

**Jan. 22<sup>nd</sup> at Mt. Holly.** Ski activities are open to the whole family with all youth accompanied by their guardian. We'll meet up and group up with matching skills, etc. and make an evening out of it. Adults and kids can share their time or hang separately; this is

truly one of the most flexible groups around! Go to this web site for full information: <http://www.goski.com/resorts/rusami/mtholly.htm#Pro>.

We'll be hooking up for the evening session which runs from 3:00 to 11:00 on Saturdays. All area lift tickets run \$29.00 but they have beginner ticket prices and rentals. Call for details.



**the LUGE?** We've scheduled a date for learning how to do the Luge at the Muskegon Luge facility; **February 5<sup>th</sup> at 12:00 (1:00 pm class)**. This is the only date and time we could reserve several training slots. Check out site: <http://www.msports.org/index.html> for important requirements & descriptions. For \$40 you can be trained and also join in on the "open" luge period that evening.

I have reserved 6 slots that **must be paid for by January 21<sup>st</sup>** or they get released. Call 1-231-744-9629 and **tell them you're with UUCF** to reserve your slot. Those that are going can get together and plan travel arrangements. Please e-mail me at [dan.faber@eds.com](mailto:dan.faber@eds.com) to let me know you're coming and have reserved your slot. If you'd like to be on a mailing list dedicated to this group, please e-mail Dan Faber. Especially let me know if you have any ideas to add! If you are knowl-

edgeable about an outdoor activity that would be fun for UUCF folks to enjoy, please let me know and we'll see what it takes to coordinate it. The general planning for an event is simple. Tell people where, when and what – they show up and participate.

*Dan Faber, Social Events*

## New UU educational program:

UUCF is offering a great opportunity for newer members or prospective members and friends to **learn more about Unitarian Universalism** and specifically how it applies to UUCF. This program provides a 2 hour class on 4 consecutive Sundays where you can learn about our UU religion, organizational structure, history and other related knowledge. You'll meet new friends and share some common experiences as well as meet our minister, long term members, board members, and other involved people in your church family. The schedule is January 16th, 23rd, 30th and February 6th. Each class will start at 12:30 and run till about 2:30. We'll provide lunch for all and child care is free of charge. Call the church office during normal hours to register for this class. Registration is requested to be in by January 10th so that we can prepare for our younger guests and plan for the meals and materials.

If there are questions, please call me

Thanks!

*Dan Faber*

## SUNDAY, JANUARY 16—10:30 AM JUNIOR YOUTH GROUP PARENT MEETING

If you have a child in the 6th, 7th or 8th grade, we are holding a planning meeting for the years' events. Please come and help us fill our calendar with social events your child would enjoy.

*Diane Nolan &  
Denise Lester*

### NEW CHURCH MEMBERS

David Powers has been coming to our church for 8-10 years, and has just recently decided to become a member. He is an architect and designs health care facilities. David's wife is a librarian and works at Lawrence Tech and OCC. Their two children are in college. David really enjoys our Life-long Learning Forum, particularly because of the diversity of the programs.

Jill Weber and Scott Schneiderhan live in Commerce Township. Jill is a physician in family practice at Providence Hospital, while Scott is a behavioral psychologist working in private practice in Commerce Township. They decided to come to our church after Jill's experience at a Chicago UU Church. Both love the outdoors. Jill is a runner and Scott loves to rock climb.

Bill and Pat Keck and their 14-year old son, Nathan, recently joined the church. Nathan is in R.E. but their 3 older children are grown and living on their own. Pat grew up in a religious household as her grandfather was a Methodist minister. She drifted away from the church but has always had a strong interest in religion. One aspect of our church that she enjoys is that we not only respect but honor individuality.

Pat is a nurse but currently spends her time as a homemaker, while Bill works for a specialty chemical company which provides products that allow metal to adhere to paint, this being of particular use in the automotive industry.

Pat and Bill are both interested in gourmet cooking and travel, particularly in Europe.



"Everything that irritates us about others can lead us to an understanding of ourselves"

*Carl Jung*

### **GUEST AT YOUR TABLE**

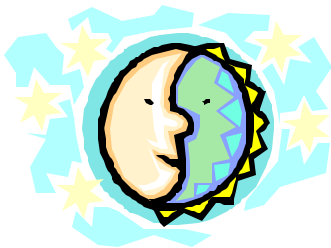
Please return your Guest At Your Table boxes as soon as possible. Please put your name and address on the bottom of the box. Checks are welcome. Membership in the UU Service Committee is \$25, \$10 for Students and Seniors. A \$60 donation is matched by a church in Manhasset, New York. The Service Committee is working to help the victims of the tsunami. If you want to help this is an opportunity. To find out exactly what they are doing you can go to [www.uusc.org](http://www.uusc.org).

Thank you all and Happy New Year!

*Pat Blackard, UUSC Representative*

**Daytimers**

December found our group in high spirits. It was a mild and sunny day. most were on hand--we missed Pat Blackard, she was helping the Good-fellows. Joan Larson too was not on hand, she had had a bad fall in the past few weeks. There were 4 of the group that had had falls in the past few weeks. We seniors need to be more careful. Bob Hawkes too was missing as were the Christies as they are away till spring. Everyone put their 2 cents worth in our conversation as it went around the table. Everyone enjoyed the luscious cake that had a mousse filling. Then the fun time arrived. We all drew numbers and went to the well for our surprise gift as it came up. The fun part was with each following number that person could take your gift or go to the well. Well the gift swapping, if you will, was hilarious. a good time was had by all and well after 2:30 pm we all headed for home. In Jan. Nancy Bailey will be "our leader". We briefly discussed our future Ford Motor Co. trip. In Jan. we have a guest speaker, talking about the phones. All are welcome the 3rd Thur.



of each month. We meet at noon till 2 ish. brown-bagging it. Bev Manheimer will be furnishing dessert as this is our routine each month to have someone

bring dessert. See you next year on Thur. Jan. 20th 2005.

*Your leader, Beverly Manheimer*

**UU QUILTERS**

As of January 2005, we will be meeting on the 2nd & 4th Mondays of every month thru May. We will be meeting in an upstairs classroom. See you there.

**Unsung Hero Award**



I would like to thank the Executive Board for selecting me as UUCF's Un-sung Hero for November of 2004. No thanks are necessary from anyone though, for anything that I have ever done for my church community. I chose to be a part of this church family on May 1, 1994. I joined the Social Events Committee shortly after, if not before. Being a member of this family, there are always jobs to be done around this large House of ours. I grew up with eight other siblings, and every one pitched in and helped, being a part of a family. Everything I have ever done for UUCF has been with love, for the beautiful building I share with my family members and friends. Though a structure doesn't make a home, people do. So, more importantly, I've done whatever I could do to help, with love for YOU. Everybody here plays a part ... a part of my wonderful family, in our home that brings me joy.

From my soul with gratitude and love,  
*Janet Barna*

**"Our dilemma is that we hate change and love it at the same time; what we really want is for things to remain the same but get better."**

**--Sydney J. Harris**

**MEIJER COMMUNITY REWARDS**

*Are you helping UUCF raise funds quickly and easily by participating in Meijer Community Rewards? We need your support. It's free and can be done on-line at [Meijer.com/rewards](http://Meijer.com/rewards) or pick up an application at the table downstairs in Adams Hall. Whenever you shop at Meijer we will automatically receive a check every month for a percentage of your purchase totals. Check out the family & friends option also. Even if you don't shop at Meijer, families and friends can help support this UUCF fundraiser.*

*A Liberal Voice of Reason in Farmington for Over 150 years*

**MAGNET deadlines for 2005**

**Noon**

January	January 2nd
February	January 30th
March	February 27
April	April 3rd
May	May 1st
June	May 29
July	June 26
August	July 31
September	August 28
October	September 25
November	October 30
December	November 27

**MARK YOUR CALENDARS**

**2004 REIMBURSEMENT**

Doug Callow, UUCF Treasurer, requests that all committees have their blue slips for 2004 submitted by Sunday, January 9 in order to receive reimbursement for 2004 expenses.

**LIMITS & DEADLINES!**

The Magnet editors are appealing to the congregation to make submittals to the Magnet shorter (under 300 words or about one column of a 2-column page). Budget for postage has exceeded expectations so cuts will have to be made! You can also sign up to receive the Magnet via e-mail.

PLEASE submit them by NOON on the deadline date! The process of compiling the Magnet takes several days. Please be considerate and make the deadline.

Published Monthly by:



**UU CHURCH  
OF FARMINGTON**

25301 HALSTED,  
FARMINGTON HILLS 48335  
(248) 478-7272

E-Mail -  
info@uufarmington.org

UUCF Website: <http://uufarmington.org>

Listen to sermons via the Internet:

<http://sermons.uufarmington.org>

**Church Hours:** Monday, Tuesday, Wednesday,  
Friday— 8:00 a.m. – 2:00 p.m.

Rev. Alexander Riegel, *Minister*

Kathy Silver, *Director of Religious Education*

Diana Munch, *Music Director*

Mary Mancini, *Office Administrator*

Noreen Palmer & Sally Richards, *Magnet Editors*

**Magnet E-Mail:** [magnet@uufarmington.org](mailto:magnet@uufarmington.org)

Priscilla Fleming, Nancy Hayden, Joan Larson, Barb Windsor -  
*Magnet Distribution*

**Next Magnet Deadline:**

January 30, 2005